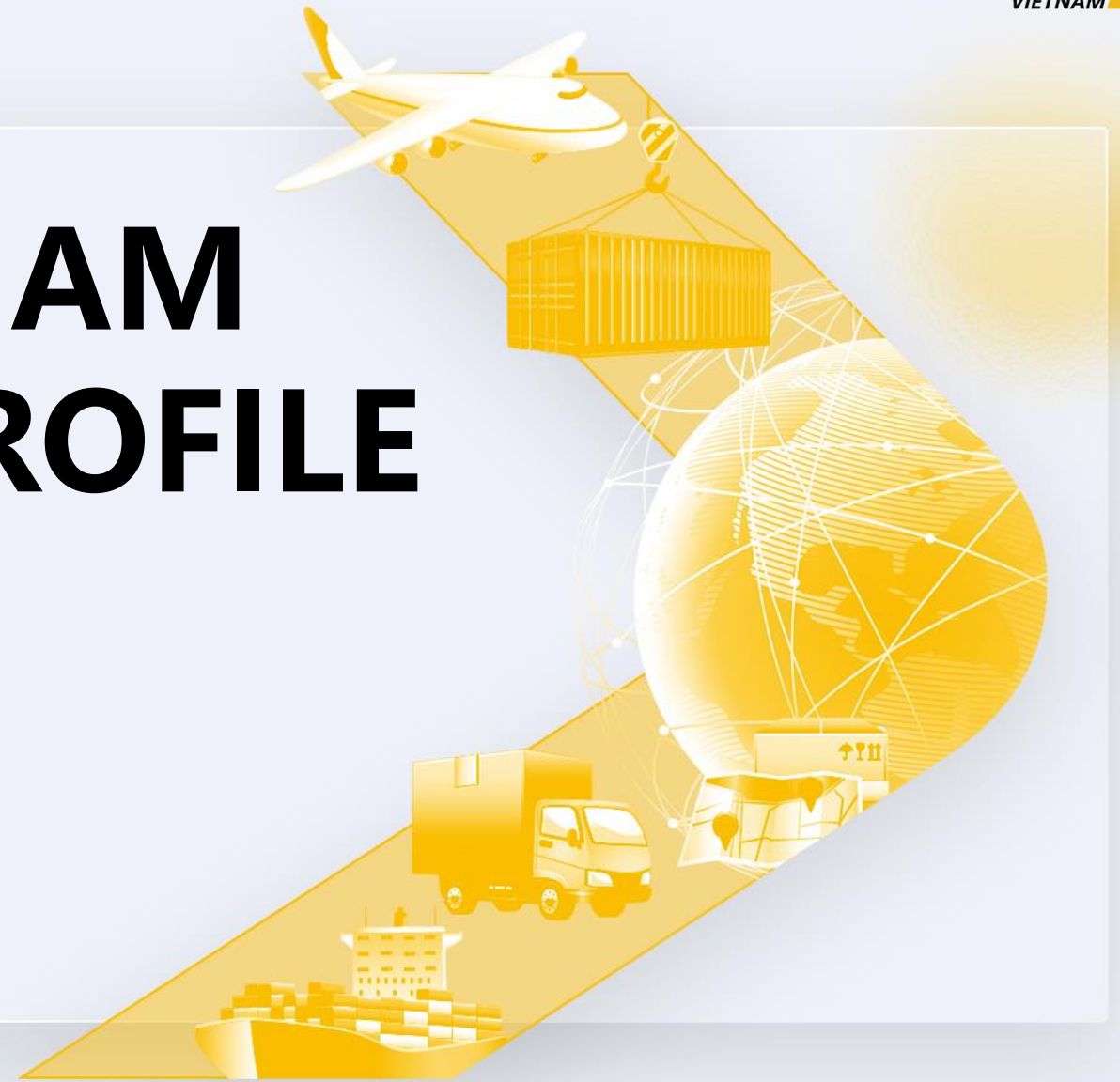


# JUSDA VIETNAM COMPANY PROFILE

**JUSDA**

JUSDA International Supply Chain  
Management (Viet Nam) Co., Ltd



# Global Network

**15+**  
Countries and Regions  
built local team

**2,000+**  
International  
Air/Rail/Sea/Land Routes

**2,500,000M<sup>2</sup>**  
Warehouse Capacity

**155+**  
Global Distribution  
Centre

**> 600+**  
Global core cities coverage

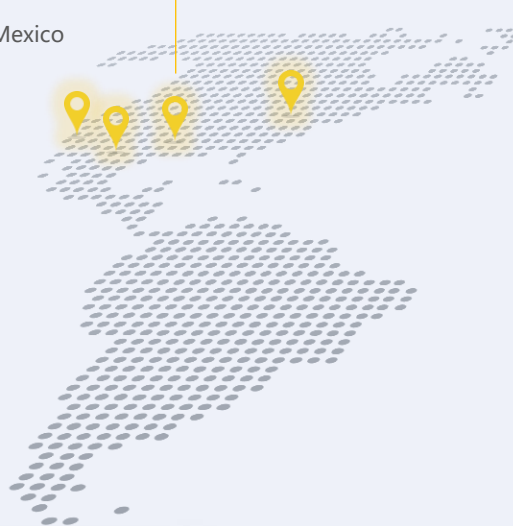
Annual Sea Throughput  
**300,000+ TEU**

Annual Rail Turnover  
**10,000+ TEU**

Annual Air Volume  
**150,000 Tons**

California, US  
Texas, US  
Indiana, US

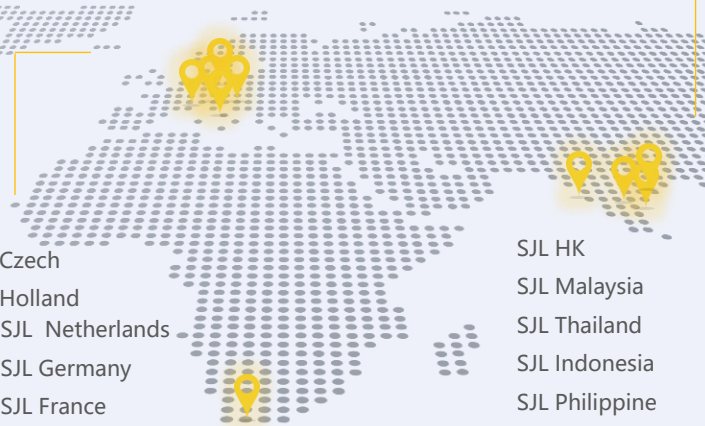
Mexico



Gurugram, IN  
Mumbai, IN  
Bangalore, IN  
Chennai, IN

Czech  
Holland  
SJL Netherlands  
SJL Germany  
SJL France

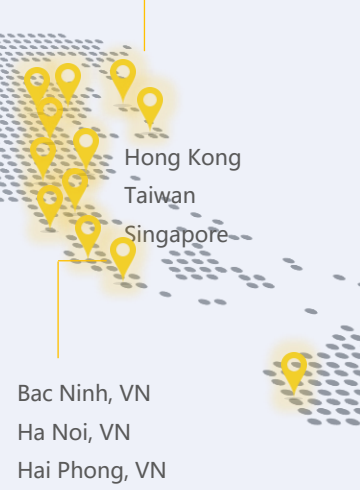
South Africa



SJL HK  
SJL Malaysia  
SJL Thailand  
SJL Indonesia  
SJL Philippine

Bac Ninh, VN  
Ha Noi, VN  
Hai Phong, VN

Hong Kong  
Taiwan  
Singapore



SJL Japan  
FSK Korea

Sydney  
Melbourne  
Adelaide  
Perth



*SJL: Sharp Jusda Logistic*

# Company Overview



**2008 Set-Up**  
Established in Vietnam

**~123,000m<sup>2</sup> Warehouse**  
Warehouses x 9  
(CMI & VMI + JIT)

**> 800+ Employees**  
600 DL, 200 IDL

**60,000+ Trips/yearly**  
Domestics Truck Resources

**5 Offices**  
Bac Ninh /Bac Giang/ Hai Phong  
/Ho Chi Minh/ Binh Duong

**6,500+ Tons Air/yearly**  
(20% Asia Import,  
80% EU/USA Export)

**1 Clean-Room**  
Location: VSIP Tu Son, BN

**21,600+ Feu/yearly**  
(75% CN Import,  
25% EU/USA Export)

**1000+ Customers**  
Customer Base Foxconn 60%  
Non-Foxconn 40%

**160+ Professionals**  
Custom Officers  
Multiple Language speakers

## End-To-End Supply Chain Solution

### Transportation

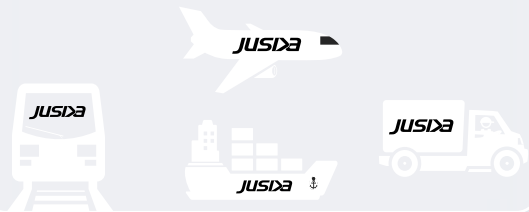
Air Freight Service

Sea Freight Service

Trucking Service

Vietnam – China - Europe  
Railway Express

Freight Management



### Customs

Self-Owned Custom Team

Multi-Language Capability:  
Chinese, English & Vietnamese

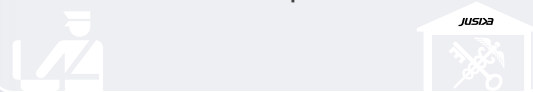
New & Used Equipment Handling

Electronic, Automobile,  
Semiconductor Raw Material

Shortest Cargo Handover:  
Off-Terminal

Close Relationship with Custom

+15 Years Experience



### Warehousing

Total over 123,000 sqm

9 Warehouses + JIT

Inventory Transparency  
Management: eVMI & Juslink

Warehouse Categories:  
General, Bonded, DC & FG  
Consolidation

Scope of Services: Picking,  
Packing, Labeling, Kitting,  
Switch Doc, Repacking  
Software Upgrade & Rework



### Value Added Service

+6 Years of Clean Room Sorting  
Experience

Professional iPhone & iPad  
Components Appearance Inspection

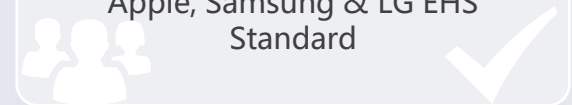
Equipment Relocation Service

Laboratory Testing Service

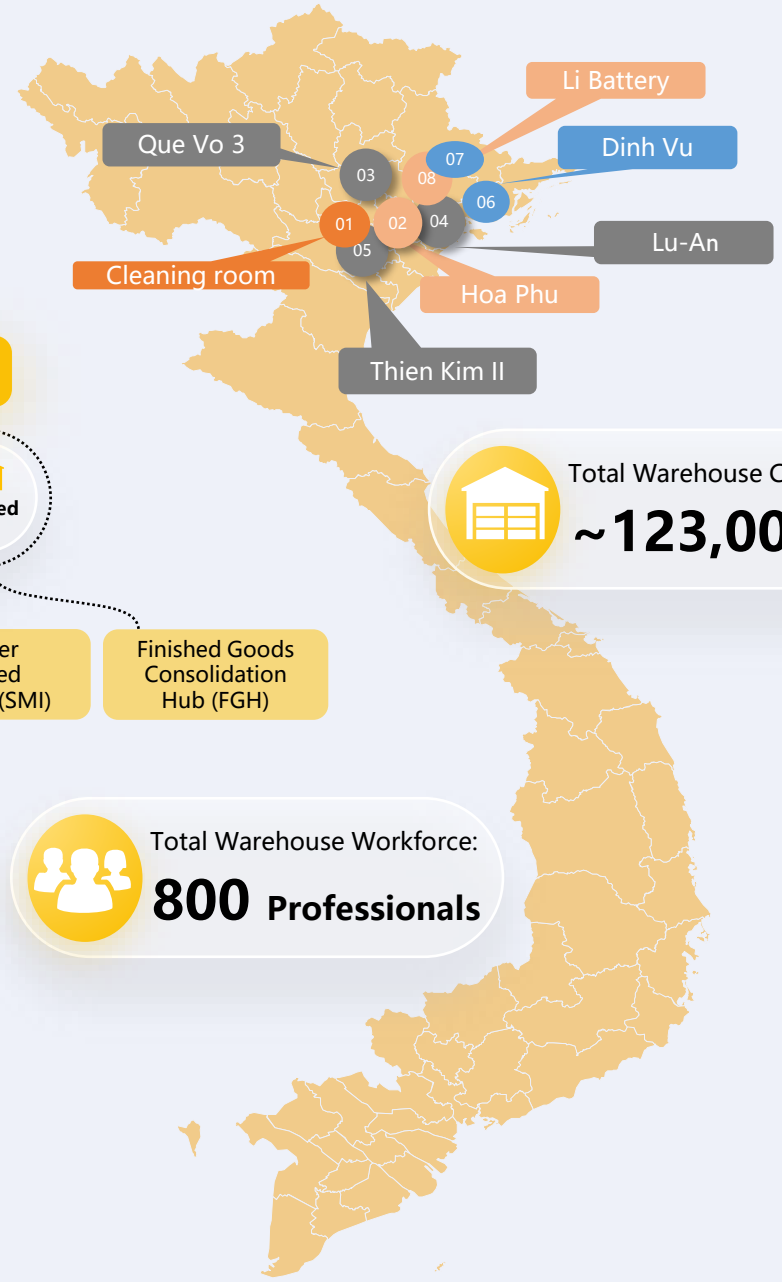
Simple Processing,  
General Trade (IOR/EOR),  
Courier Express Business License

4M1E Management: Man,  
Machine, Material, Method,  
Environment

Clean Room Compliance with  
Apple, Samsung & LG EHS  
Standard



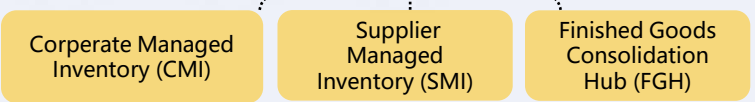
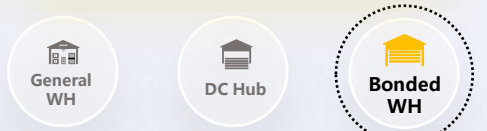
# Warehouse Overview



Total Warehouse Capacity:  
**~123,000spm**

Total Warehouse Workforce:  
**800 Professionals**

## Warehouse Type & VAS



- Cargo Reinforcement
- Pick & Pack
- Consolidation
- IQC & Sorting
- Re-Labeling
- Rework

- 01** Cleaning room (Bonded Warehouse)  
 MT20号保税倉 面积: 4,500 sqm
- 02** Hoa Phu Warehouse ( CMI Warehouse )  
 何富倉 面積:: 2,900 sqm
- 03** Que Vo III Warehouse ( CMI Warehouse )  
 桂武三倉 面積: 18,000 sqm
- 04** Lu-An Warehouse ( CMI Warehouse )  
 陸安倉 面積: 17,600 sqm
- 05** Thien Kim-II Warehouse ( CMI Warehouse )  
 天金二倉 面積: 9,700 sqm
- 06** Haiphong Dinhvu Warehouse ( FG Consolidation Hub )  
 海防亭武倉 面積: 40,000 sqm
- 07** Bac Ninh Yenphong Warehouse ( FG Consolidation Hub )  
 北寧 安鋒倉 面積: 6,000 sqm
- 08** Li Battery Warehouse ( VMI Warehouse )  
 鋰電池倉 面積:: 2,900 sqm
- 09** Bac Giang Song Khe Warehouse ( CMI Warehouse )  
 北江雙溪江倉 面積: ~21,000 sqm

# Bonded Warehouse & Clean Room Location



CHINA

## Bonded Warehouse & Sea/Airport

- **180 km** from Langson border **4h**
- **150 km** from Haiphong Port **3h**
- **38 km** from Noi Bair Airport **40mins**

## Bonded Warehouse & Cleanroom

- BWH Area 4,000 sqm
- VMI Function
  - Clean Room 2,100 sqm (1K & 100th Grade)
  - Electric Component Quality Inspection
  - Components Sorting and Rework

# Warehouse Layout

- Total Area **8,000 sqm** (4,000 sqm Temp. & Humidity controlled)
- Automatic Clean Tray Service (**2 Production Lines**)
- 100<sup>th</sup> & 1k Grade Clean Room Area: **2,100 sqm**
- **10 x** Customer & IQC offices
- **26 x** Air-shower zone

## Clean Room

**Fingerprint Access Control**

## Security

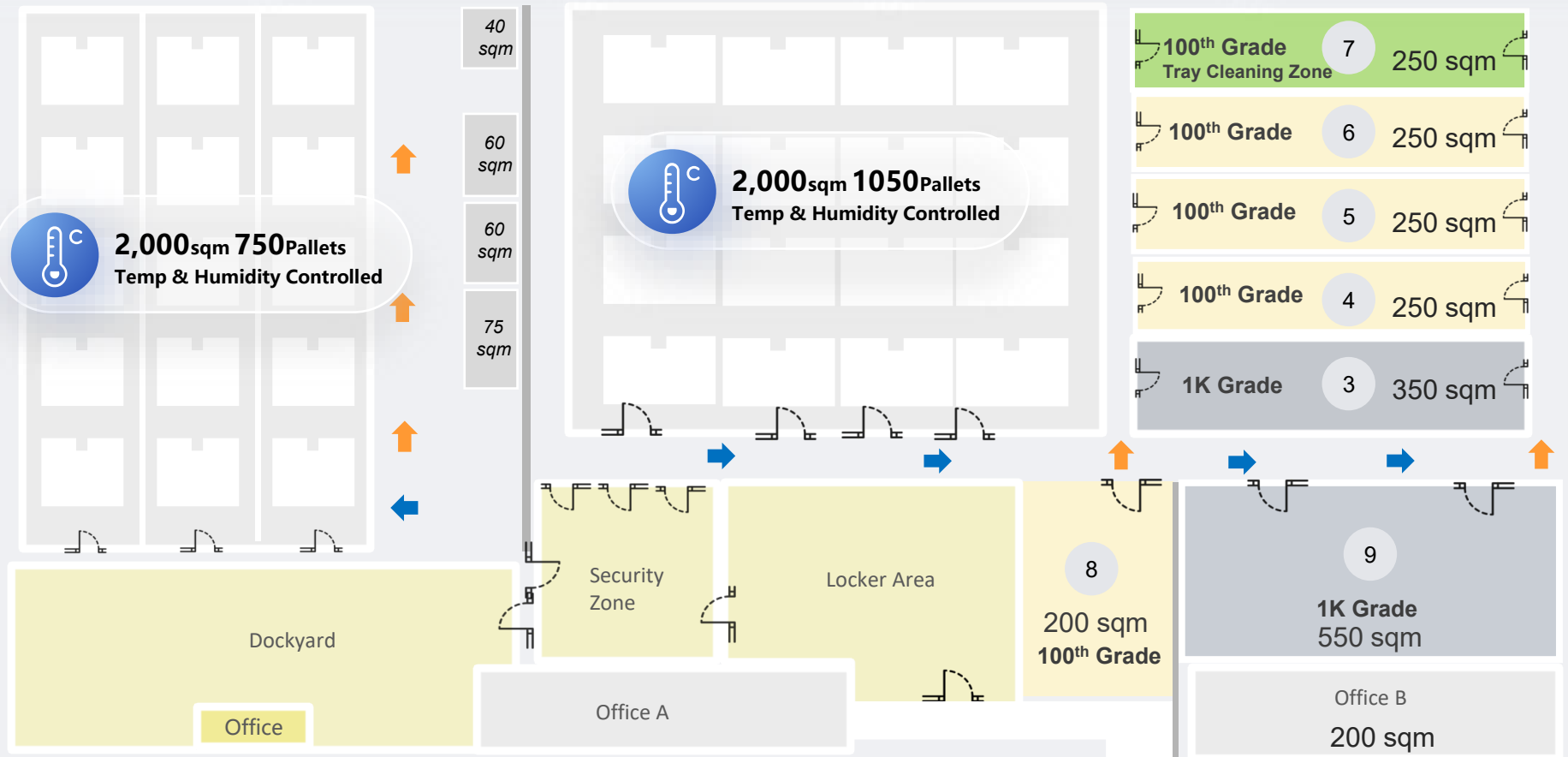
**24 – 7 Security Patrol & Management**

## High Tech

**Component Sorting FPC, Sensor, Metal, POL & CG**

## Simple Integration

**Rework, S/W Validation, Function Test**



# Warehouse Environment & Firefighting Control



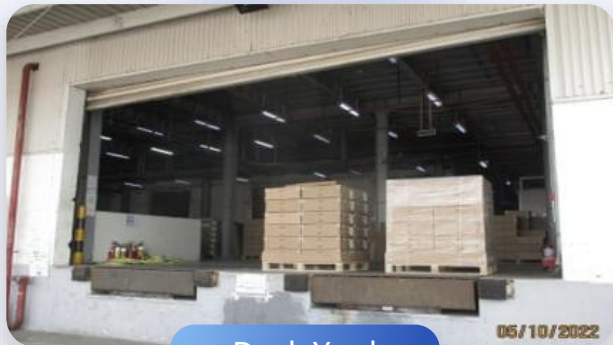
Main Gates



Loading - Unloading



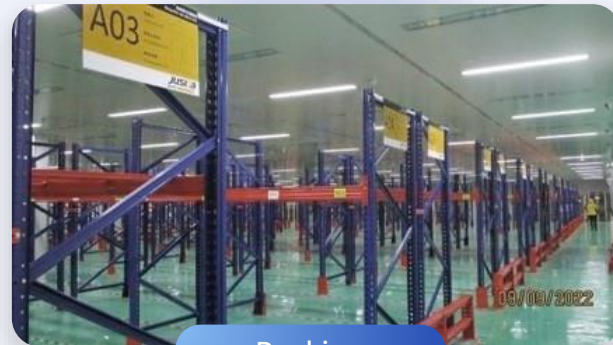
Mini Rack Area



Dock Yard



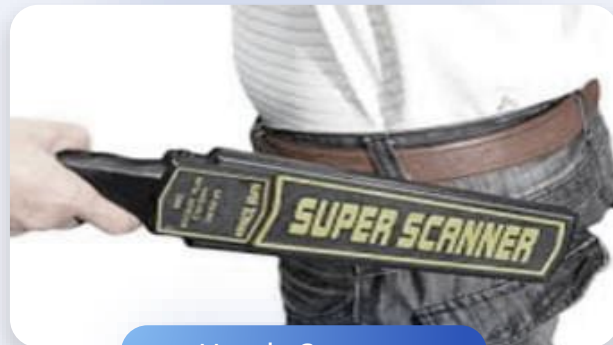
Temp Controlled



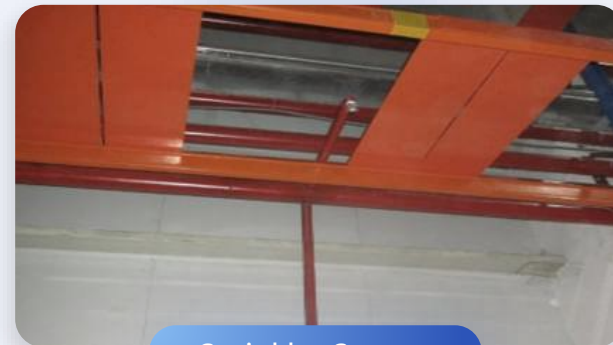
Racking



Metal Detection Door



Handy Scanner



Sprinkler System

## Pick-Up Trucking

1. Truck Registration
2. CD Documents & Tally
3. Pick up & Delivery

01

Service Lv 1

## Warehouse Storage

1. In/Out-Bound Shipment
2. Picking and Moving
3. Storage Control

02

Service Lv 2

Service Lv 3

## Value Added Service

1. Consolidation Shipment
2. Rework and Cleaning
3. Quality Inspection
4. Switch Document
5. Picking & Kitting
6. Daily Report

03

Service Lv 4

## FF & Last Mile Handling

1. NVOCC & BCO Resource Integration
2. Periodic Shipping Status Update
3. Export CC & Documents Control
4. Carrier Block Space Agreement
5. Shipping Line ETD Report
6. Booking Vessel Space
7. Last Mile Delivery

04

# Equipment Handling Service

## Our Resources



SMT, CNC, Panel,  
Semiconductor Equipment

Hoisting

Installation



Lifting Platform x37



Air Cushion x36



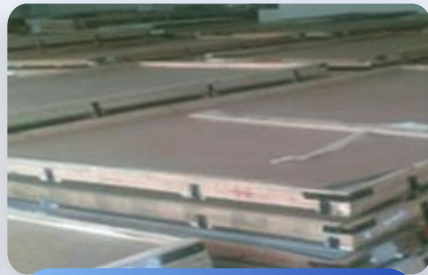
Gantry x12



Auto Compressor x19



Working Containers x30



SUS/PVC Plate +10,000



Aerial Work Vehicle x110



Tank Wheel x200



Unpacking



Transferring



Positioning &  
Calibrating



Fixing & Installation

# Warehouse Value Added Service



Package Reinforcement



Consolidation



Quality Inspection



Picking & Packing



Labeling



Rework



RMA Management



Freight Management



# Inbound: Raw Material Import from China & Overseas

Major Supply Chain Solution for Raw Materials Inbound to Vietnam

- Cross Border Trucking
- Ocean Freight

## Pingxiang Consolidation Hub – Bac Ninh / Bac Giang

1. For China-Vietnam Cross-Border Trucking
2. For Suppliers use in North/East/South of China
3. Daily Shuttle Service between Pingxiang & Langson
4. 7 \* 24 Hours Custom Clearance & Working Hours
5. Green-Pass Priority

Pingxiang Consolidation Hub  
Pingxiang to Bac Giang Transit Time: **1 ~ 2 Days**



## Bangtai Consolidation Hub – Bac Ninh / Bac Giang

1. For Hong Kong – Vietnam Ocean Service
2. For Suppliers use in and North/East/South of China & Overseas
3. +200 Daily Trucks between Shenzhen & Hong Kong
4. 24-7 Custom Clearance & Working Hours

HK Bangtai Consolidation Hub  
Bangtai to Bac Giang Transit Time: **5 ~ 6 Days**

# Air Freight to US from Vietnam

- Expensive Freight Cost
- Airport Congestion
- Space Shortage

## Alternative Solutions for Meeting Following Situations

### Original Schedule – via Hanoi --- Air

Vietnam Hanoi to USA ( Port to Port )						
POL	Region	Space Capacity / Weekly	POD	Frequency	Routing	Transit Time Days
HAN	USA	50 Tons	LAX / SFO	Daily	HAN – TPE - LAX	2 ~ 3
HAN	USA	120 Tons	DFW / JFK	Daily	HAN – TPE - JFK	4 ~ 5

### Alternative Solution 1 - via China --- Border Trucking + Air

Vietnam to USA via China Major City Airports ( Door to Port )					
Region	Border Trucking	POD	Frequency	Routing	Transit Time Days
USA	Langson - Pingxiang	CAN	Daily	HAN – CAN - USA	6 ~ 7
		PVG	Daily	HAN – PVG - USA	7 ~ 8
		CGO	Daily	HAN – CGO - USA	7 ~ 8
		HKG	Daily	HAN – HKG - USA	4 ~ 5

### Alternative Solution 2 – via Ho Chi Minh --- Domestic Trucking + Air

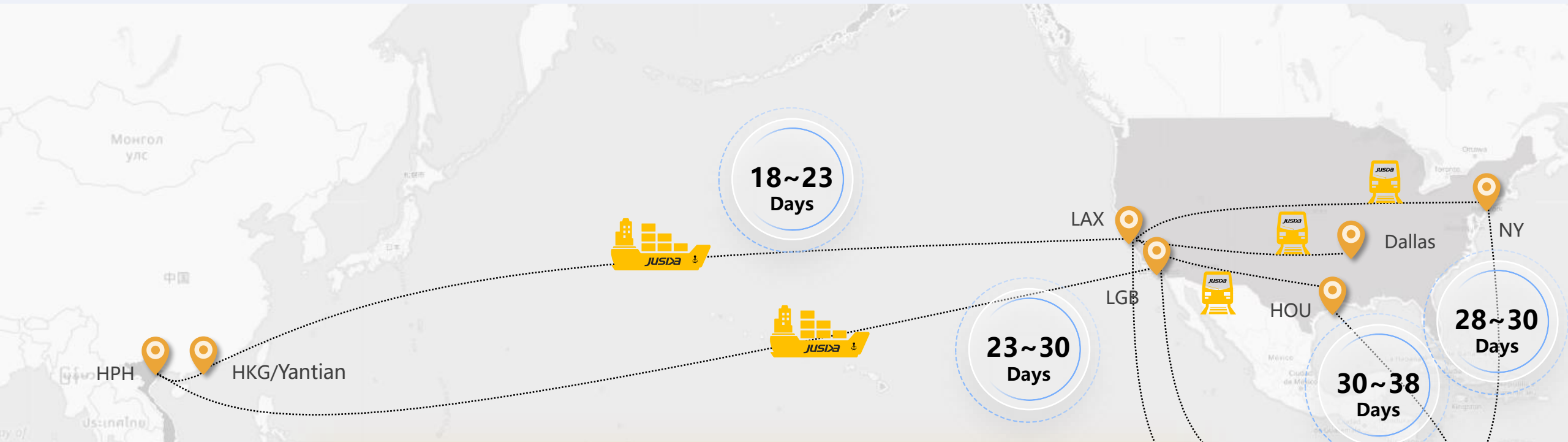
Vietnam to USA via Ho Chi Min Airport ( Door to Port )						
POL	Region	Domestic Trucking	POD	Frequency	Routing	Transit TimeDays
HAN	USA	Bac Giang - Ho Chi Minh	SGN	Daily	SGN – TPE - USA	5 ~ 6

### Alternative Solution 3 – via Thailand --- Border Trucking + Air

Vietnam to USA via Ho Chi Min Airport ( Door to Port )						
POL	Region	Domestic Trucking	POD	Frequency	Routing	Transit TimeDays
HAN	USA	Bac Giang - Bangkok	BKK	Daily	BKK – TPE - USA	6 ~ 7

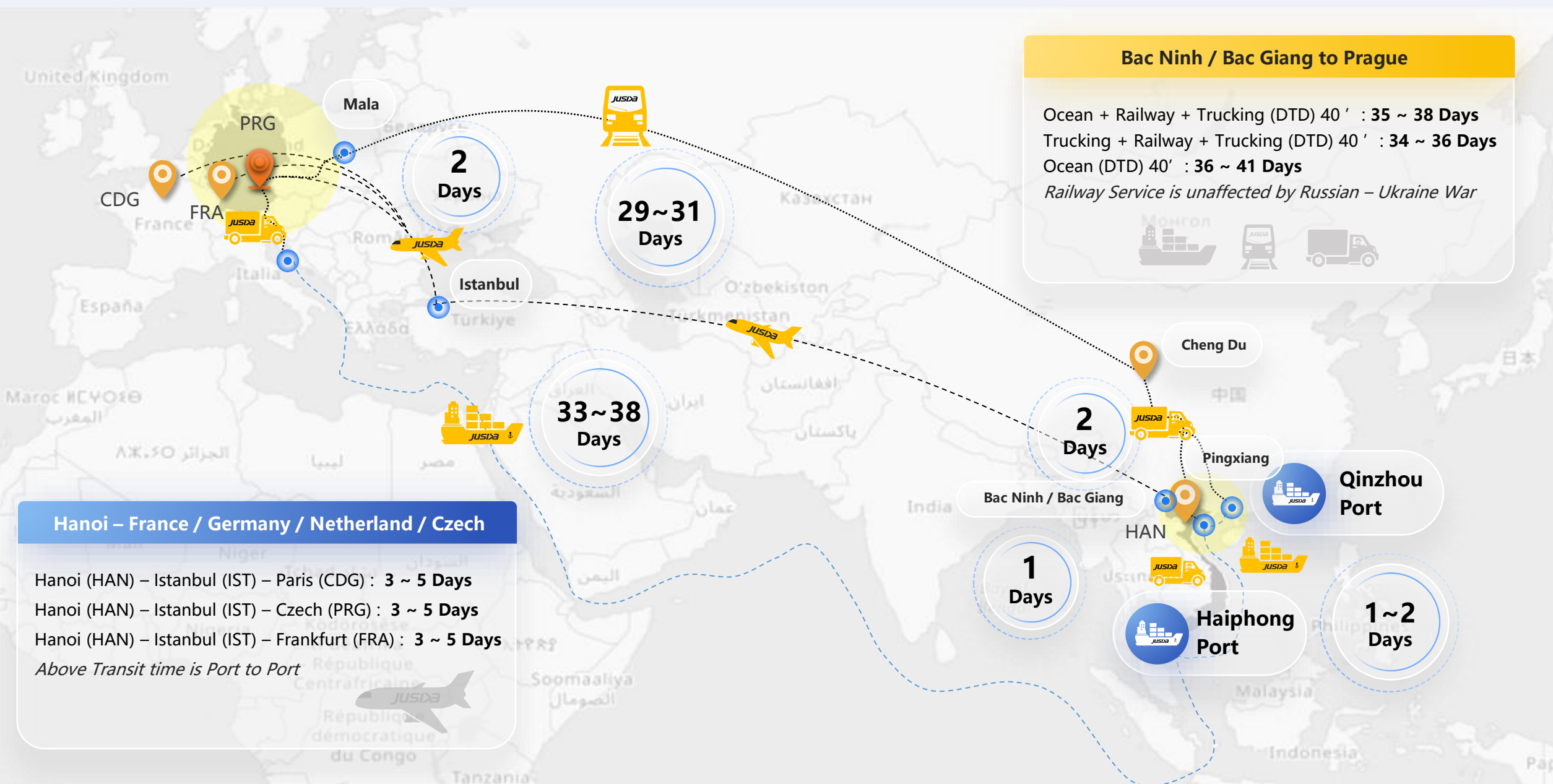


# Ocean Freight to US



Ocean Port	Transit Time (Days)	Frequency	Remark
LB & LAX	18-23	Tue	* Direct Vessel (14,000 TEU since May 2019)
Dallas	35-38	Mon, Fri	* All-Water (POD Houston)
	30-36	Mon, Fri	* Railway (POD Dallas Ramp)
New York	33-38	Mon, Fri	* All-Water (POD New York)
	28-30	Mon, Fri	* Railway (via Long Beach)

# Trucking, Ocean Freight & Railway to Europe



**Bac Ninh / Bac Giang to Prague**

Ocean + Railway + Trucking (DTD) 40' : **35 ~ 38 Days**  
 Trucking + Railway + Trucking (DTD) 40' : **34 ~ 36 Days**  
 Ocean (DTD) 40' : **36 ~ 41 Days**  
*Railway Service is unaffected by Russian – Ukraine War*

**Hanoi – France / Germany / Netherland / Czech**

Hanoi (HAN) – Istanbul (IST) – Paris (CDG) : **3 ~ 5 Days**  
 Hanoi (HAN) – Istanbul (IST) – Czech (PRG) : **3 ~ 5 Days**  
 Hanoi (HAN) – Istanbul (IST) – Frankfurt (FRA) : **3 ~ 5 Days**  
*Above Transit time is Port to Port*





# Company Organization

JUSDA Global - **Kathy Yang**

JUSDA Southeast Asia - **David Wu**

JUSDA Vietnam

**Salesman**  
**Jimmy Wang**

F1 Lina/Jeremy/Thomas

F2

F3 Jiufa/Yang Kuan

F4 Dolly/Eddie

F5 Alex

**Warehouse**  
**Wang Meng (F)/**  
**Martin (Non- F)**

Hai Phong

Lu-An (Bac Giang)

Que Vo 3 (Bac Ninh)

Yen Phong (Bac Ninh)

Thien Kim (Bac Ninh)

Sorting hub (Vsip BN)

Hoa Phu (Bac Giang)

Li Battery (Bac Giang)

Song Khe (Bac Giang)

**Logistics**  
**Leo**

Trucking Arron

Sea/Air Amy

Customs Amy

Customer Services  
Arron

**Product & Procurement**

Trucking Alex

Sea/Air

**Marketing & Solutions**

Marketing Miley

Solutions Martin

PM & OE Bianca

**Administrative Support**

Finance & Accounting  
Julie

Security/  
ISO  
Wangmeng

IT  
Anthony

Human resources &  
General Affairs  
Bobby

Accounting  
Dim

Cost & Billing  
Dim

# THANK YOU

MORE THAN YOUR EXPECTATION



0222 363 1666



[www.jusdascm.com](http://www.jusdascm.com)

